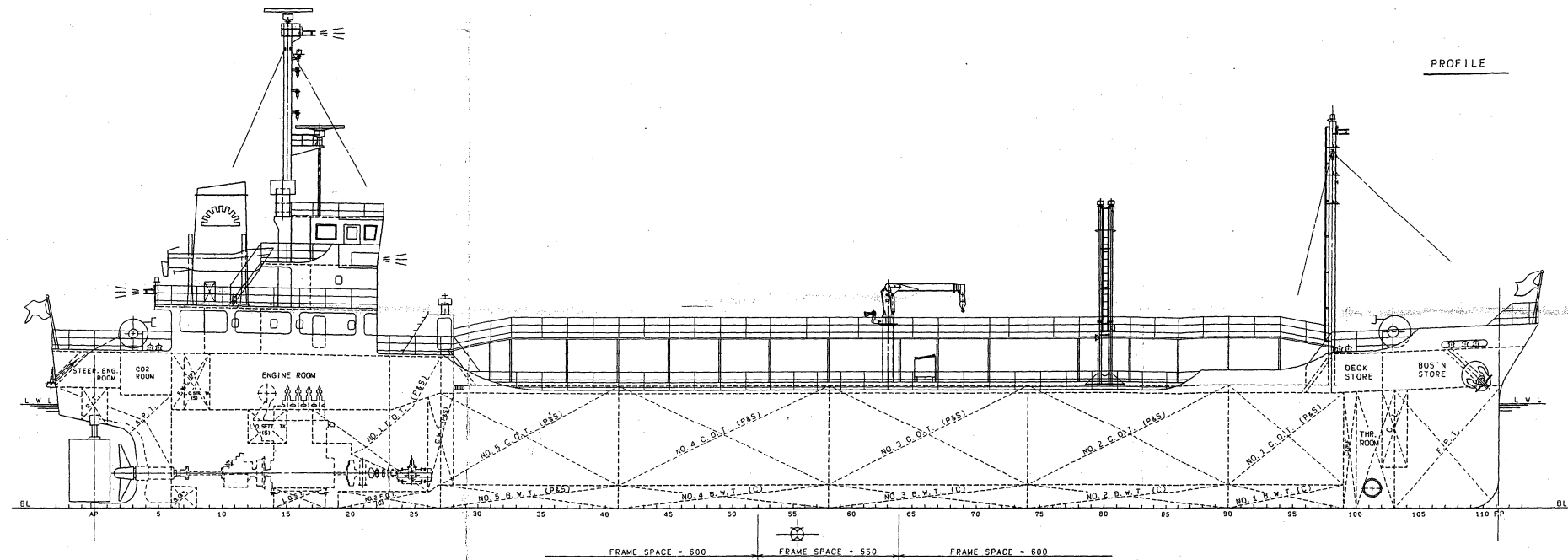
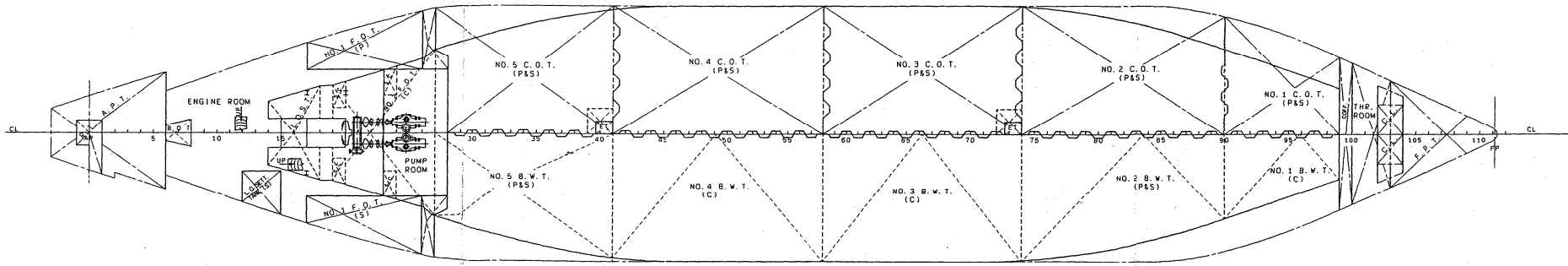
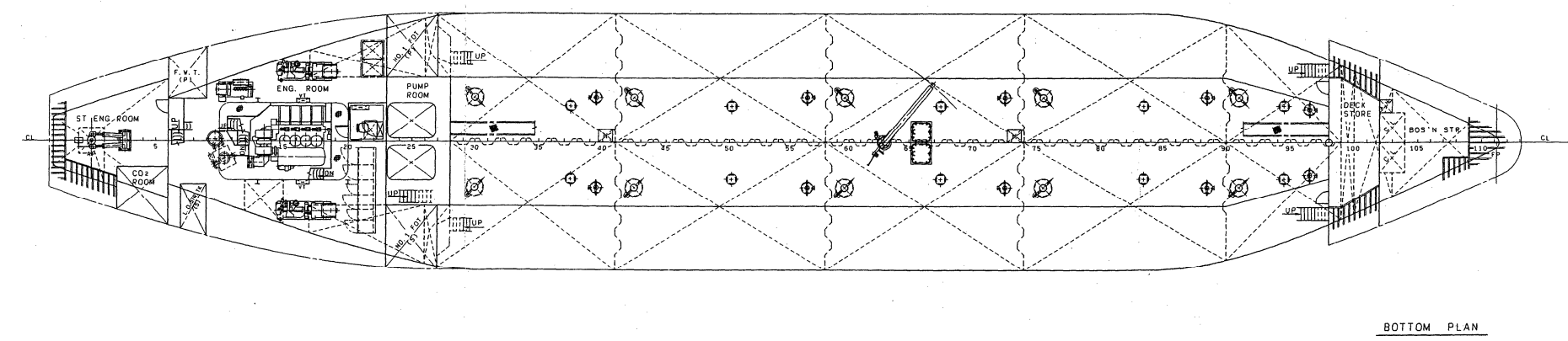
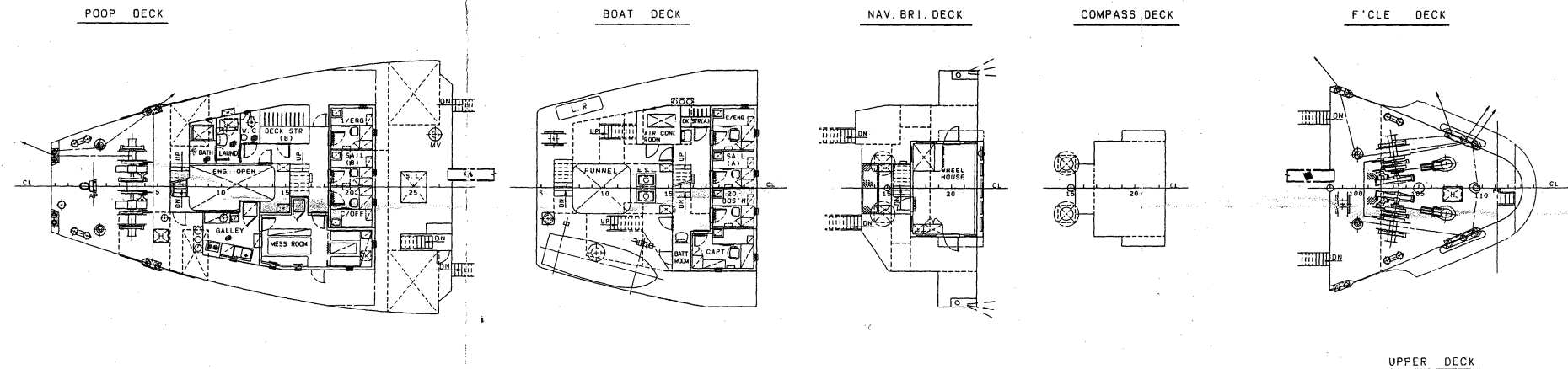


GENERAL ARRANGEMENT

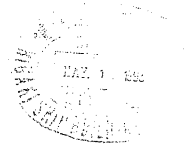


PRINCIPAL DIMENSION

LENGTH (O. A.)	69.92 M
LENGTH (B. P.)	66.10 M
BREADTH (MLD)	12.00 M
DEPTH (MLD)	5.35 M
DRAFT (DLWL)	4.875 M
DEAD WEIGHT	1976.57 KT
GROSS TONNAGE (JG)	698 T
TANK CAPACITY	2168.151 M ³
MAIN ENGINE	1980 PS
SPEED SERVICE	ABT. 11.5 KNT
SPEED TRIAL MAX	ABT. 12.2 KNT
COMPLEMENT	7 P
CLASS	NK NS*(C.S.)(T.O.B.61°C) "nf".MNS*
NAVIGATION AREA	COASTING SERVICE



総トン数明細書添付図面
平成5年5月18日
四国運輸局今治海運支局



聖 継

CON-FERRED	DESIGNING DEPARTMENT	SHIP'S NAME	
	HULL DES. SECTION	聖 朋 海 運 株 式 会 社	
CHIEF	GENERAL ARRANGEMENT		
HEAD			
CHECKED			
DRAWN			
SHIP NO.	CLASS	SCALE	DWG. NO.
S-430.	N. K.	1/150	H - 200
HIGAKI SHIPBUILDING CO., LTD.			DATE 18th. MAY 1993